

# Women's LAB COATS



**Classic Lab Coat  
Style #6089**

32" Mid-length  
 Notched Collar  
 Left chest pocket  
 Two patch pockets  
 Pleated back  
 w/ button detail  
 Poly/Cotton Twill

Sizes 4 - 20  
 Reg. \$36.95

*Value Price*  
**\$28.95**

Sizes 40W - 48W  
 Reg. \$36.95

*Value Price*  
**\$28.95**

**Long Lab Coat  
Style #107**

37" length  
 Inside pocket  
 Hand access slits  
 One-piece back  
 Two-piece swing belt  
 65/35 Poplin.

Sizes 4 - 20  
 Reg. \$32.95

*Value Price*  
**\$25.95**

Sizes 40W - 48W  
 Reg. \$36.95

*Value Price*  
**\$27.95**



**Classic Lab Coat  
Style #3194**

30" Mid-length  
 Notched Collar  
 Princess style front  
 and back  
 Two inset pockets  
 Mock back belt  
 Poly/Cotton Twill

Sizes 6 - 20

Reg. \$29.95

*Value Price*  
**\$23.95**

**¾ Sleeve Lab Coat  
Style #15012**

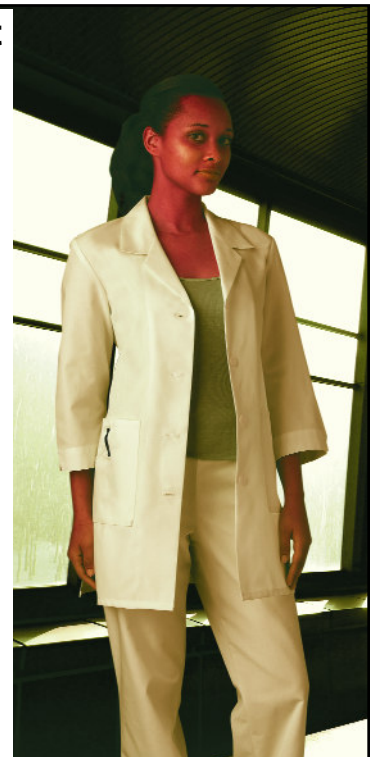
33" length  
 Notched ¾ sleeves.  
 Side vents, 3 pockets.  
 65/35 poplin with soil  
 release.

Sizes XS - XL  
 Reg. \$26.95

*Value Price*  
**\$21.95**

Sizes 2XL - 5XL  
 Reg. \$32.95

*Value Price*  
**\$25.95**



**Order form on back page!**

## Men's LAB COATS



### Classic Lab Coat Style #1963

38" length  
Three inside and three outside pockets  
Pleated back with sewn down belt  
Poly/Cotton Twill

Sizes 32 - 48  
Reg. *Value Price*  
\$36.95 **\$28.95**

Sizes 50 - 60  
Reg. *Value Price*  
\$42.95 **\$33.95**

Sizes 38<sup>tall</sup> - 48<sup>tall</sup>  
Reg. *Value Price*  
\$40.95 **\$32.95**

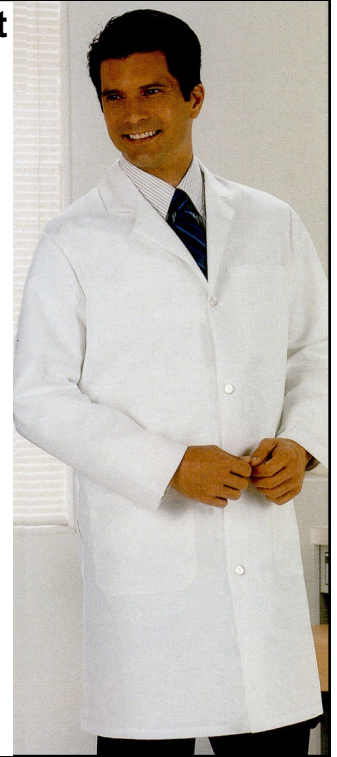
Sizes 50<sup>tall</sup> - 56<sup>tall</sup>  
Reg. *Value Price*  
\$43.95 **\$34.95**

### Traditional Lab Coat Style #423

41" length  
Four cloth knot buttons  
One chest pocket  
Two lower pockets  
Two-piece back belt  
100% cotton

Sizes 28 - 50  
Reg. \$42.95  
*Value Price*  
**\$33.95**

Sizes 52 - 56  
Reg. \$50.95  
*Value Price*  
**\$40.95**



### Mid-Length Lab Coat Style #1168

34" Mid-length  
Inside pocket  
Chest pocket  
Pleated back with sewn down belt  
Poly/Cotton Poplin  
Size 34 - 48  
Reg. \$33.95

*Value Price*  
**\$26.95**

Size 50 - 56  
Reg. 37.95  
*Value Price*  
**\$29.95**

### Consultation Coat Style #1961

Three inside pockets  
Three outside pocket  
Inside snap loop for keys  
65/35 Twill

Sizes 32 - 48  
Reg. *Value Price*  
\$33.95 **\$26.95**

Sizes 50 - 60  
Reg. *Value Price*  
\$37.95 **\$29.95**

Sizes 38<sup>tall</sup> - 48<sup>tall</sup>  
Reg. *Value Price*  
\$36.95 **\$28.95**

Sizes 50<sup>tall</sup> - 56<sup>tall</sup>  
Reg. *Value Price*  
\$38.95 **\$30.95**



**Order form on back page!**

# LAB COAT Order Form

**Print this page. Fill out the required information and  
 fax it to: 757 459-2390 or  
 Email it to: sales@jenessuniforms.com  
 your lab coats will be ready within a few days.**

Company Name: \_\_\_\_\_

Email: \_\_\_\_\_

Ordered by: \_\_\_\_\_

Phone #: \_\_\_\_\_

Ordered For: \_\_\_\_\_

Signature: \_\_\_\_\_

Style#	Size	Quantity	Price	Total
_____	_____	_____	X _____	= _____
_____	_____	_____	X _____	= _____
_____	_____	_____	X _____	= _____
_____	_____	_____	X _____	= _____
_____	_____	_____	X _____	= _____
_____	_____	_____	X _____	= _____
<b>Embroidery</b> (up to 3 lines)			X \$8.50	= _____
<b>Shipping</b> (free for 3 or more coats)				<b>\$7.00</b>
<b>Subtotal</b>				_____
<b>Sales Tax</b>				x 5%
<b>Total Amount</b>				_____

Bill to our account PO# \_\_\_\_\_  
(must have current account with Jeness Uniform Centers)

Credit Card: \_\_\_\_\_  
 exp. date \_\_\_\_\_ Security Code# \_\_\_\_\_

Call when ready for pick up. \_\_\_\_\_

Ship to: \_\_\_\_\_

Attention \_\_\_\_\_

Location & Department \_\_\_\_\_

Address \_\_\_\_\_

City, State ZIP \_\_\_\_\_

**Use a separate form for each  
different embroidery!**

First Line

Second Line

Third Line

Neatly print each line exactly as it is to be embroidered Use UPPER and lower case lettering and include punctuation.

\_\_\_\_\_  Heart Chest

\_\_\_\_\_  Opposite Chest

Select thread color shown below  
 Select lettering style shown below.  
 Confirm the style, size, and, the embroidery information.  
 Embroidered garments can not be returned or exchanged.

Thread Navy	Royal	<b>Traditional Block</b>	<b>Brantford Block</b>	<i>Traditional Script</i>	<i>Allegra Script</i>
Colors: Black	Wine				
Hunter	Red				
Kelly	Purple				

The lab coats listed on this order form are in stock and available for immediate delivery. For more styles go to [www.jenessuniforms.com/jenhealth.htm](http://www.jenessuniforms.com/jenhealth.htm) and click on "Buy Online" or "White Swan".